

# Join the Wearables research study

Through the use of wearable technology, our study's goal is to build an algorithm that can predict post-operative complications prior to the start of symptoms in cardiothoracic surgery patients.

## PARTICIPATION INVOLVES:

- Wearing a Fitbit watch for up to 14 days before surgery and up to 90 days after surgery
- Completing surveys throughout the study

## POTENTIAL BENEFITS:

- Your participation will benefit future patients
- The Fitbit will allow you to monitor many aspects of your health and recovery

## YOU MAY QUALIFY IF:

- You are:
  - > 18 years old
  - Undergoing major cardiac or general thoracic surgery
- AND you don't have:
  - Severe irreversible pulmonary hypertension
  - Congenital heart disease
  - Chronic renal insufficiency and/or currently undergoing dialysis
  - History of liver cirrhosis
  - Current pregnancy

[www.wearables.mgh.harvard.edu](http://www.wearables.mgh.harvard.edu)

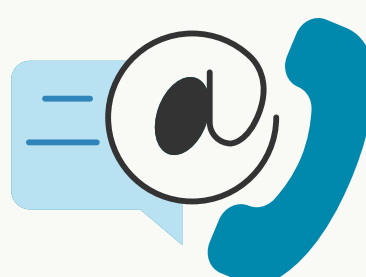
MGH WEARABLES

*A clinical trial at Massachusetts General Hospital in Collaboration with Case Western Reserve University*



### Location:

Massachusetts General Hospital  
55 Fruit St, Boston, MA 02114



### Contact:

Principle Investigator: Dr. Chi-Fu Jeffrey Yang  
CJYang@mgh.harvard.edu